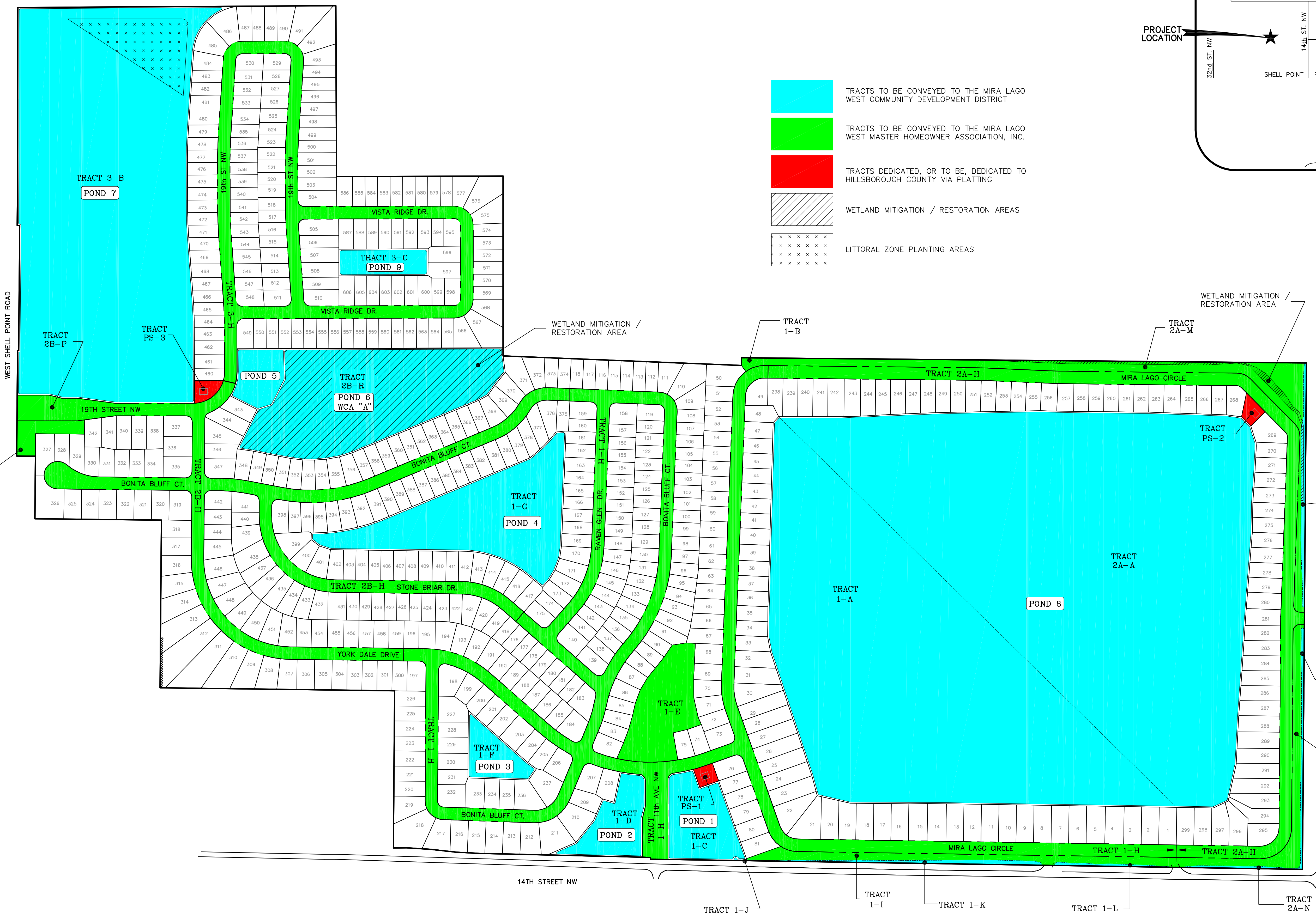


- TRACTS TO BE CONVEYED TO THE MIRA LAGO WEST COMMUNITY DEVELOPMENT DISTRICT
- TRACTS TO BE CONVEYED TO THE MIRA LAGO WEST MASTER HOMEOWNER ASSOCIATION, INC.
- TRACTS DEDICATED, OR TO BE DEDICATED TO HILLSBOROUGH COUNTY VIA PLATTING
- WETLAND MITIGATION / RESTORATION AREAS
- LITTORAL ZONE PLANTING AREAS



23rd ST. NW  
20th ST. NW  
19th ST. NW

19th AVENUE NW  
TRACT 2A-O  
TRACT 2A-N  
TRACT 2A-I

14th STREET NW  
TRACT 1-J  
TRACT 1-I  
TRACT 1-K  
TRACT 1-L  
TRACT 2A-N

K:\VDA\Projects\Apollo\YODA\_DEDICATION.dwg - Jun 12, 2008 @ 1:18pm - Rancier

DESIGNED	EM
DRAWN	JS
CHECKED	EM
A.C.	EM

**FLORIDA DESIGN CONSULTANTS, INC.**  
ENGINEERS, ENVIRONMENTALISTS, SURVEYORS & PLANNERS  
3030 Starkey Blvd, New Port Richey, FL 34655  
Tel: (727) 849-7588 - Fax: (727) 849-3648  
E.B. No. 7421

PREPARED FOR:  
**THE RYLAND GROUP, INC.**  
255 PINE AVENUE NORTH  
OLDSMAR, FLORIDA 34667  
PHONE (813) 329-7600 FAX (813) 329-7688

**STANDARD PACIFIC HOMES**  
5100 W. LEMON ST. SUITE 306  
TAMPA, FLORIDA 33609  
PHONE (813) 282-1616 FAX (813) 287-1616

SHEET DESCRIPTION:  
**MIRA LAGO DEDICATIONS**

NO.	DATE	REVISIONS

JOB NO.	506-70
EPN	105
P.R. & P.C.	
DATE	4/19/05
APP'D BY	

© Copyright 2008 Florida Design Consultants, Inc. Drawings and concepts may not be used or reproduced without written permission.